

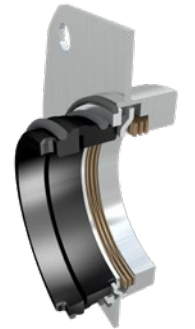
UNIVERSAL 3 PUMP SEALS

GEAR BOX SEALS	QTY	MODEL 006	MODEL 015	MODEL 018	MODEL 030	MODEL 040	MODEL 045	MODEL 060	MODEL 130	MODEL 180	MODEL 220	MODEL 210	MODEL 320
Oil Seal, Gear Case Cover	1		000030016+		000030013+		000030012+			STD030006		STD030004	
Oil Seal, Gear Case Rear	2		000030017+		000030014+		000030011+			STD119002		102475+	
Grease Seal, Bearing Retainer	2		121679+		121680+		101829+			121681+		121681+	
O-Ring, Buna, Oil Plug	5		N70114		N70114		N70114			N70114		N70114	
O-Ring, Rotor Nut - EDPM	2		E70121		E70126		E70224			E70228		E70231	
O-Ring, Rotor Nut - FKM	2		V70121		V70126		V70224			V70228		V70231	
O-Ring, Rotor Nut - FFKM	2		K70121		K70126		K70224			K70228		K70231	
Cover Gasket - FKM	1		137422+		130296+		133633+			137431+		139750+	133636+
Cover Gasket - FFKM	1		137423+		137240+		137241+			137432+		139751+	137243+
Cover Gasket - EDPM	1		137424+		137245+		137246+			137433+		139752+	137248+

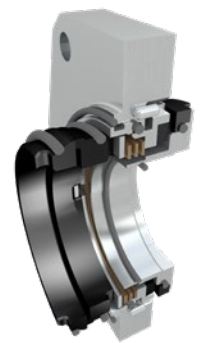
STANDARD SEALS- U3	QTY	MODEL 006	MODEL 015	MODEL 018	MODEL 030	MODEL 040	MODEL 045	MODEL 060	MODEL 130	MODEL 180	MODEL 220	MODEL 210	MODEL 320
Adjusting Ring O-Ring - EPDM	2		E70024				E70031					E70150	
Adjusting Ring O-Ring - FKM	2		V70024				V70031					V70150	
Adjusting Ring	2		138246+				137980+					138212+	
O-Ring, Flush Rotary Seal - EPDM	2		E70130				E70145					E70245	
O-Ring, Flush Rotary Seal - FKM	2		V70130				V70145					V70245	
Flush-Side Rotary Seal SC	2		138371+				138372+					138373+	
Seal Retaining Bolt	6		30-546				30-546					30-741	
Flush-Side Stationary Seal C	2		139787+				139788+					139789+	
O-Ring, Flush Stationary Seal - EPDM	2		E70134				E70147					E70248	
O-Ring, Flush Stationary Seal - FKM	2		V70134				V70147					V70248	
Wave Spring (sold as a kit with 158B)	2		139890+				139892+					139894+	
Drive Ring (sold as a kit with 158A)													
Seal Housing Bolt	8		30-765		30-725		30-742					30-742	
Seal Housing - DM, Includes Stop Pin	2		138245+		137979+		138074+			138192+		138289+	
Stop Pin, Seal	4		137124+				137985+					138451+	
Shaft Ring - DM	2		LA1215200				LA1215400					N/A	
Seal Housing O-Ring - EPDM	2		E70036				E70041					L25071004	
Seal Housing O-Ring - FKM	2		V70036				V70041					L25071002	
Product Stationary O-Ring Seal - EPDM	2		E70135				E70147					E70248	
Product Stationary O-Ring Seal - FKM	2		V70135				V70147					V70248	
Product Stationary O-Ring Seal - FFKM	2		K70135				K70147					K70248	
Product-Side Stationary Seal - SC	2		138368+				138369+					138370+	
Product-Side Stationary Seal - C	2		138385+				138386+					138387+	
Product-Side Stationary Seal - TC	2		138400+				138401+					138402+	
Product-Side Stationary Seal - SC NF	2		139592+				139596+					N/A	
Product-Side Stationary Seal - TC NF	2		139593+				139597+					N/A	
Product-Side Rotary Seal - SC	2		138362+				138363+					138364+	
Product-Side Rotary Seal - TC	2		138394+				138395+					138396+	
Product Rotary O-Ring Seal - EPDM	2		E70135				E70147					E70248	
Product Rotary O-Ring Seal - FKM	2		V70135				V70147					V70248	
Product Rotary O-Ring Seal - FFKM	2		K70135				K70147					K70248	
Seal Housing Bolt	8		30-546				30-741					30-745	
Seal Housing - SM	2		138244+		137946+		138076+			138195+		138343+	
Wave Spring (sold as a kit with 169B)	2		139891+				139893+					139895+	
Drive Ring (sold as a kit with 169A)													
Shaft Ring - SM	2				LA2363201							N/A	
Stationary Seal - SC	2		138365+				138366+					138367+	
Stationary Seal - C	2		138382+				138383+					138384+	
Stationary Seal - TC	2		138397+				138393+					138399+	
Stationary Seal - SC NF	2		139590+				139594+					N/A	
Stationary Seal - TC NF	2		139591+				139595+					N/A	

SPECIALTY SEALS- U3	QTY	MODEL 006	MODEL 015	MODEL 018	MODEL 030	MODEL 040	MODEL 045	MODEL 060	MODEL 130	MODEL 180	MODEL 220	MODEL 210	MODEL 320
O-Ring, Sleeve Back - EPDM	2		E70024				E70031					E70150	
O-Ring, Sleeve Back - FKM			V70024				V70031					V70150	
O-Ring, Sleeve Back - FFKM			K70024					K70031				K70150	
Spring Seat, O-Ring Seal	2		138467+				138442+					139115+	
Wave Spring	2		139799+				101685+					101688+	
Button Socket Head Cap Screw (BSHCS)	8		30-546				30-742					30-741	
Housing, Single O-Ring Seal	2		138470+		138424+		138425+			139098+		139099+	
Seal O-Ring, Housing - EPDM	2		E70036				E70041					L25071004	
Seal O-Ring, Housing - FKM			V70036				V70041					L25071002	
Seal O-Ring, Housing - FFKM			K70326					K70041				N/A	
O-Ring, Seal - EPDM	2/4		E70326				E70331					E70343	
O-Ring, Seal - FKM			V70326				V70331					V70343	
O-Ring, Seal - FFKM			K70326					K70331				K70343	
Sleeve, O-Ring Seal	2		138465+				138428+					139116+	
O-Ring, Sleeve Front - EPDM	2		E70135				E70146					E70248	
O-Ring, Sleeve Front, FKM			V70135				V70146					V70248	
O-Ring, Sleeve Front - FFKM			K70135					K70146				K70248	
Housing, Double O-Ring Seal	2		138466+		138426+		138427+			139095+		139097+	

Seal Options



Single Mechanical Seal



Double Mechanical Seal



Single o-ring Seal



Double o-ring Seal

SPX FLOW, Inc.

611 Sugar Creek Road, Delavan, WI 53115

P: (262) 728-1900 or (800) 252-5200

E: wcb@spxflow.com

SPX FLOW reserves the right to incorporate our latest design and material changes without notice or obligation.

Design features, materials of construction and dimensional data, as described in this bulletin, are provided for your information only and should not be relied upon unless confirmed in writing. Please contact your local sales representative for product availability in your region. For more information visit www.spxflow.com. The green ">" is a trademark of SPX FLOW, Inc.

ISSUED 11/2018 PP-003 COPYRIGHT © 2018 SPX FLOW, Inc.

To Order Seals or Other Genuine Pump Parts, Contact Your Authorized Waukesha Cherry-Burrell Distributor

> Waukesha Cherry-Burrell®